



**Aluminum & Aluminum-Alloy Drawn Tubes for
General Purpose Applications
(ASTM B 483)**

DRAWN TUBE SIZES IN LEVELWOUND COILS

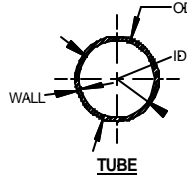


Table II "Tube in Coil"

Standard Drawn Level Wound Coil (LWC)				
Normal Size (in.)	O.D. (in.)	Ovality (in.)	Wall (in.)	Wt/Ft (lbs.)
.375 x .049	.376 ± .003	± .006	± .003	0.0592
.500 x .049	.502 ± .003	± .011	± .003	0.0820
.625 x .049	.627 ± .003	± .017	± .003	0.1046
.750 x .049	.753 ± .003	± .025	± .003	0.1275
Non-Standard Drawn Level Wound Coil (LWC)				
O.D. Size (in.)	Wall (in.)	O.D. Size (mm)	Wall (mm)	
0.150 to 2.000	≥ 0.015	4 to 50	≥ 0.4	

Coils can be provided in ether Bulk or on Reels

